



# Roxtec EzEntry™

Lekkie uszczelnienia przepustów kablowych z kompozytową ramą.

Przepusty uszczelniające Roxtec EzEntry™ mają lekkie kompozytowe ramy i pasują bezpośrednio do standardowych otworów. Dostępne są w sześciu rozmiarach mieszczących od 4 do 32 kabli oraz zapewniają stopień szczelności IP 66/67.



- Odporne na korozję
- Kompaktowe
- Możliwość przeprowadzenia przewodów z końcówkami

## Charakterystyka produktu



IP/UL NEMA

## Struktura podłoża instalacyjnego



Szafy i obudowy

## Sposób montażu



Przykręcanie śrubami

## Klasy i certyfikaty

### Szczelność

- IP 66/67, UL/NEMA 4,4X,12,13

## Wymiary ramy

mm/kg

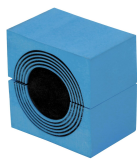
Poniżej przedstawiono tylko kilka przykładowych wariantów ram. Pełna oferta ram i konfiguracji jest dostępna w witrynie [roxtec.com](https://www.roxtec.com).

Tytuł	Okna w ramach	Przeźreń uszczelniana	Wymiary zewnętrzne WxHxD	Wymiary otworu w x h	Waga	Nr katalogowy
EZENTRY 4 MINI FRAME ASSEMBLY	1	40 x 40	76 x 76 x 24		0.08	EZ00044000000
EZENTRY 16 FRAME ASSEMBLY	1	40 x 160	90 x 228 x 34	37(+1/-0) x 158(+2/-0)	0.44	EZ00016000000
EZENTRY 16 COUNTER FRAME			215 x 17.5 x 12		0.24	2CV0000000016
EZENTRY 24 FRAME ASSEMBLY	2	40 x 120	90 x 325 x 41	37(+1/-0) x 255(+2/-0)	0.7	EZ00024000000
EZENTRY 32 FRAME ASSEMBLY	2	40 x 160	90 x 405 x 41	37(+1/-0) x 335(+2/-0)	0.9	EZ00032000000
EZENTRY 4 FRAME ASSEMBLY	1	40 x 40	70 x 97 x 31	37(+1/-0) x 42(+2/-0)	0.21	EZ00040000000
EZENTRY 10 FRAME ASSEMBLY	1	40 x 100	70 x 168 x 31	37(+1/-0) x 108(+2/-0)	0.27	EZ00010000000

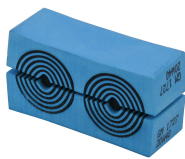


# Dane elementów uszczelniających

## Elementy uszczelniające



Moduł CM z systemem Multidiameter™



Moduły GM z systemem Multidiameter™



Moduły EM z technologią Multidiameter™



Lubricant



Żel montażowy Roxtec

 Szczegółowe informacje można znaleźć na [roxtec.com](https://www.roxtec.com).

# Gotowe zestawy przepustów

mm/kg



EZENTRY 4/4



EZENTRY 4 MINI/4



EZENTRY 4 MINI/9



EZENTRY 10/4



EZENTRY 10/7



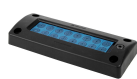
EZENTRY 10/10



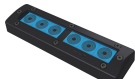
EZENTRY 16/4



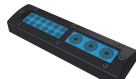
EZENTRY 16/10



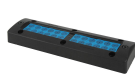
EZENTRY 16/16



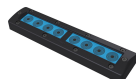
EZENTRY 24/6



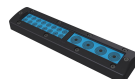
EZENTRY 24/15



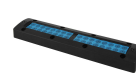
EZENTRY 24/24



EZENTRY 32/8



EZENTRY 32/20



EZENTRY 32/32

Tytuł	Konfiguracja	Wymiary zewnętrzne WxHxD	Wymiary otworu w x h	Waga	Nr katalogowy
EZENTRY 4/4	4x (3.5-16.5)	70 x 97 x 31	37(+1/-0) x 42(+2/-0)	0.22	EZ0000000044
EZENTRY 4 MINI/4	4x (3.5-16.5)	76 x 76 x 24	51(+1/-0) x 51(+2/-0)	0.13	EZ00000000440
EZENTRY 4 MINI/9	9x (3.5-10.5)	76 x 76 x 24	51(+1/-0) x 51(+2/-0)	0.17	EZ00000000490
EZENTRY 10/4	2x (3.5-16.5), 2x (9.5-32.5)	70 x 168 x 31	37(+1/-0) x 108(+2/-0)	0.38	EZ00000001004
EZENTRY 10/7	6x (3.5-16.5), 1x (9.5-32.5)	70 x 168 x 31	37(+1/-0) x 108(+2/-0)	0.39	EZ00000001007
EZENTRY 10/10	10x (3.5-16.5)	70 x 168 x 31	37(+1/-0) x 108(+2/-0)	0.35	EZ00000001010
EZENTRY 16/4	4x (9.5-32.5)	90 x 228 x 34	37(+1/-0) x 158(+2/-0)	0.6	EZ00000001604
EZENTRY 16/10	8x (3.5-16.5), 2x (9.5-32.5)	90 x 228 x 34	37(+1/-0) x 158(+2/-0)	0.7	EZ00000001610
EZENTRY 16/16	16x (3.5-16.5)	90 x 228 x 34	37(+1/-0) x 158(+2/-0)	0.7	EZ00000001616
EZENTRY 24/6	6x (9.5-32.5)	90 x 325 x 41	37(+1/-0) x 255(+2/-0)	1.2	EZ00000002406
EZENTRY 24/15	12x (3.5-16.5), 3x (9.5-32.5)	90 x 325 x 41	37(+1/-0) x 255(+2/-0)	1.2	EZ00000002415
EZENTRY 24/24	24x (3.5-16.5)	90 x 325 x 41	37(+1/-0) x 255(+2/-0)	1.1	EZ00000002424
EZENTRY 32/8	8x (9.5-32.5)	90 x 405 x 41	37(+1/-0) x 335(+2/-0)	1.5	EZ00000003208
EZENTRY 32/20	16x (3.5-16.5), 4x (9.5-32.5)	90 x 405 x 41	37(+1/-0) x 335(+2/-0)	1.5	EZ00000003220
EZENTRY 32/32	32x (3.5-16.5)	90 x 405 x 41	37(+1/-0) x 335(+2/-0)	1.5	EZ00000003232

The product information provided by Roxtec does not release the purchaser of the Roxtec system, or part thereof, from the obligation to independently determine the suitability of the products for the intended process, installation and/or use.

Roxtec gives no guarantee for the Roxtec system or any part thereof and assumes no liability for any loss or damage whatsoever, whether direct, indirect, consequential, loss of profit or otherwise, occurred or caused by the Roxtec systems or installations containing components not manufactured by an authorized manufacturer and/or occurred or caused by the use of the Roxtec system in a manner or for an application other than for which the Roxtec system was designed or intended.

Roxtec expressly excludes any implied warranties of merchantability and fitness for a particular purpose and all other express or implied representations and warranties provided by statute or common law. User determines suitability of the Roxtec system for intended use and assumes all risk and liability in connection therewith. In no event shall Roxtec be liable for indirect, consequential, punitive, special, exemplary or incidental damages or losses.

The Roxtec products are offered and sold in accordance with the conditions of the Roxtec General Terms of Sales. The latest version of the Roxtec General Terms of Sales can be downloaded from <https://www.roxtec.com/en/about-us/about-roxtec/general-terms-of-sales/>

We reserve the right to make changes to the product and technical information without further notice. Any errors in print or entry are no claims for indemnity. The content of this publication is the property of Roxtec International AB and is protected by copyright.

This document was generated on: 2024-03-22